

1857 South Green Road
South Euclid, Ohio 44121
P 216.382.2110
F 216.382.3555

rhsguidance@reginahigh.com
www.reginahigh.com

CEEB Code 364-725

2008-2009

School Profile

PRINCIPAL

Sr. Maureen Burke, SND
MA, EdD

ASSISTANT PRINCIPAL

Sr. Sally Huston, SND
MA

DIRECTOR OF GUIDANCE

Rosemary V. Lips
M. Ed., NCC

MISSION STATEMENT

Regina High School, a college preparatory high school sponsored by the Sisters of Notre Dame, is a vibrant Catholic community, rich in diversity, and strong in unity. Through a program of academic excellence Regina empowers young women to be responsible and independent adults by challenging students to think for themselves, develop leadership, and be of service to others.

PHILOSOPHY AND GOALS OF REGINA

Continuing in the Notre Dame tradition of academic excellence, Regina is a strong faith community, which affirms the right of every student to develop her academic and creative potential through an education, which is thorough, humanizing, and Christian. A dedicated religious and lay faculty strives to prepare each student for the challenges and realities of higher education and the workplace by offering them solid academic and extracurricular programs.

REGINA HIGH SCHOOL FACULTY

The Regina faculty is a talented gathering of educators who are committed to excellence and the tenet that “all students can learn”. Seventy percent of the faculty hold advanced degrees. The faculty averages twenty-one years of teaching experience. The Notre Dame philosophy of education and virtue are ever present in the curriculum and beyond. Twenty eight percent of the faculty and administrative staff are members of the Congregation of the Sisters of Notre Dame.

THE COMMUNITY

South Euclid is a residential community with a population of 21,500 located in an eastern suburb of Cleveland. Regina serves students in the Catholic Diocese of Cleveland and 20 public school districts in Cuyahoga and neighboring counties. The student population consists of a diversity of racial, ethnic, and religious backgrounds. Minority students are 28% of the student population. The majority of students come from middle-income families.

LEARN ♦ SERVE ♦ LEAD

REGINA HIGH SCHOOL

COURSE OFFERINGS 2008 - 2009

VISUAL & PERFORMING ARTS

Art 1, 2, 3, 4
 Exploratory Art
 Ceramics 1, 2
 Yearbook
 Creativity in the Arts (*Honors*)
 Choral 1, 2, 3, 4
 Private Piano
 Instrumental Music/Orchestra
 Drama

ENGLISH

Literature and Composition I
 Literature and Composition I (*Honors*)
 World Literature
 American Writers (*Honors*)
 American Literature
 British Literature
 British Writers (*Honors*)
 AP English
 English Skills
 Communications
 Journalism
 SAT/ACT Preparation

SOCIAL STUDIES

World Cultures
 American History
 American History (*Honors*)
 AP Seminar in American History
 Government/Economics

COMPUTER SCIENCE

Word Processing
 Computer Applications
 Telecommunications
 Desktop Publishing/Journalism
 Computer Presentations

RELIGION

Theology 1, 2, 3, 4
 World Religions
 Peer Ministry
 Service Program

MATHEMATICS

Integrated Algebra I
 Integrated Algebra II
 Algebra I
 Algebra I (*Honors*)
 Geometry
 Geometry (*Honors*)
 Algebra II
 Algebra II/Trigonometry (*Honors*)
 Trigonometry and College Algebra
 Pre-Calculus (*Honors*)
 Probability/Statistics and Discrete Math
 Calculus I & II (*Honors*)

HEALTH/PHYSICAL EDUCATION

Health
 Physical Education 1, 2
 Women's Issues

LANGUAGES

German 1, 2, 3, 4
 Italian 1, 2, 3, 4
 Spanish 1, 2, 3, 4
 AP German

SCIENCE

Intro. to Physics and Chemistry
 Intro. to Physics and Chemistry (*Honors*)
 Biology
 Biology (*Honors*)
 Chemistry I
 Chemistry I (*Honors*)
 Chemistry II (*Honors*)
 Advanced Biology (*Honors*)
 Environmental Science
 Physics
 Introduction to Engineering I (*Honors*)
 Engineering II (*Honors*)
 Disciplines of Medicine (*Honors*)

SPECIAL PROGRAMS

Off-Campus Study: For qualified 11th and 12th grade students. College classes including Calculus, Philosophy, History, Humanities and English

Assistantships: Allows students the opportunity to gain further knowledge in a lab or activity situation

Shadowing: (Grade 11) An opportunity to work with a professional in a chosen occupation

Mentorship: (Grade 12) An internship program, which matches students with professionals in the Greater Cleveland area

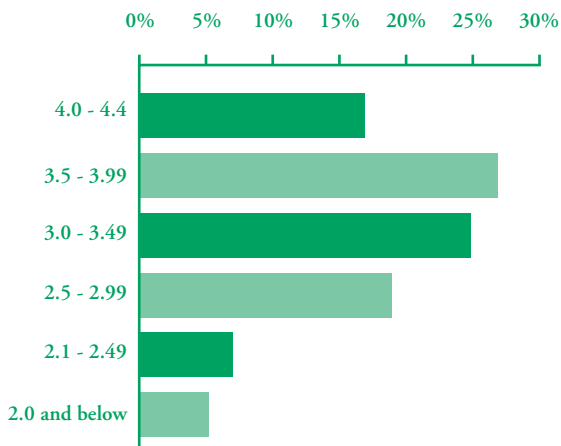
Study Abroad: One semester in Vechta, Germany, Junior Year

ECLIPSE: Engineering & Science Programs

MICRO: Medical Science Programs

CLASS OF 2009 GRADE DISTRIBUTION

At Regina students are not ranked.



GRADE & RANKING

99-100%	A+	4.3
95-98%	A	4.0
93-94%	A-	3.8
91-92%	B+	3.3
87-90%	B	3.0
85-86%	B-	2.8
83-84%	C+	2.3
77-82%	C	2.0
75-76%	C-	1.8
73-74%	D+	1.3
71-72%	D	1.0
70%	D-	.8
Below 70%	F	.00

GRADUATION REQUIREMENTS

Theology	4.00
English	4.00
Social Studies	3.00
Mathematics	3.00
Communications	.50
Science	3.00
Health/Phys.Ed.	1.00
Fine Arts	1.00
Computer Science	1.00
Foreign Language	2.00
Elective Courses	3.50
Project REAL (<i>Senior Year</i>)	NC
Service Program (<i>4 years</i>)	NC

COLLEGE BOARD TEST 2008

SAT	V	M	W
75%	650 - 740	630 - 760	630 - 720
MID - 50%	480 - 640	490 - 620	480 - 610
MEDIAN	550	575	540

AMERICAN COLLEGE TEST 2008

ACT	
75 th Percentile	24
50 th Percentile	20
Average for Group	21.5

CLASS OF 2009 STATISTICS

As of June 2008

Class Size: 52
 Median GPA: 3.414

College Acceptances Classes of 2007 and 2008

Alabama A & M
 Albion College
 Alfred State University
 Allegheny College
 American University
 Aquinas College
 Ashland University
 Baldwin-Wallace College
 Ball State University
 Bellarmine University
 Belmont Abbey College
 Bethany College
 Bethune-Cookman University
 Boston University
 Bowling Green State University
 Butler University
 Canisius College
 Capital University
 Carnegie-Mellon University
 Carson-Newman College
 Case Western Reserve University
 Catholic University
 Clark Atlanta University
 Cleveland State University
 College of Mount St. Joseph
 College of Wooster
 Creighton University
 Cuyahoga Community College
 Defiance College
 Denison University
 DePaul University
 Duke University
 Duquesne University
 Eastern Michigan University
 Eckerd College
 Edinboro University
 Elon University
 Fisk University
 Florida A & M University
 Florida Atlantic University
 Florida State University
 Fontbonne University
 Franciscan University of Steubenville
 Gannon University
 Gardner-Webb University
 Hampton University

Hiram College
 Hawaii Pacific University
 Howard University
 Indiana University of Pennsylvania
 Int'l Culinary Arts & Sciences Inst.
 John Carroll University
 Kansas State University
 Kent State University
 Kenyon College
 Lake Erie College
 Lakeland Community College
 LaSalle University
 Loyola University, Chicago
 Loyola University, Maryland
 Marietta College
 Marquette University
 Mercyhurst College
 Miami University, Ohio
 Michigan State University
 Mount St. Mary's University
 Mount Union College
 Muskingum College
 Niagara University
 Norfolk State University
 North Carolina A & T
 North Carolina Central University
 Northeastern University
 Northwestern University
 Notre Dame College
 Ohio Dominican University
 Ohio Northern University
 Ohio State University
 Ohio University
 Ohio Wesleyan University
 Otterbein College
 Pikeville College
 Purdue University
 Robert Morris University
 Rochester Institute of Technology
 Rollins College
 Rose-Hulman Institute of Technology
 Shawnee State University
 Simmons College
 Slippery Rock University
 Spelman College
 St. Bonaventure University

St. John's University
 St. Leo University
 St. Louis University
 St. Mary's College
 St. Michael's College
 SUNY Buffalo
 Syracuse University
 Tennessee State University
 Tusculum College
 University of Akron
 University of Alabama
 University of Charleston
 University of Cincinnati
 University of Dayton
 University of Eastern Kentucky
 University of Findlay
 University of Kentucky
 University of Maryland
 University of Michigan
 University of New England
 University of New Hampshire
 University of North Carolina
 University of Notre Dame
 University of Oregon
 University of Pittsburgh
 University of Rochester
 University of Scranton
 University of Toledo
 University of San Francisco
 University of the Sciences, Philadelphia
 University of Tennessee
 University of Texas Pan American
 University of Vermont
 Ursuline College
 Valparaiso University
 Virginia State University
 Walsh University
 Washington Jefferson College
 West Virginia State University
 Westminster College
 Wheeling Jesuit University
 Wilberforce University
 Wittenberg University
 Wright State University
 Xavier University
 Youngstown State University

Extracurricular *Activities*

At Regina, we believe activities that take place outside of the classroom greatly enrich the social, academic, and spiritual lives of our students. Extracurricular activities are an integral part of each student's journey through Regina. These activities embody the tenets of Regina; Learn, Serve, and Lead.

LEARN

Academic Challenge
African Dance Troupe
Chorale
Debate Club
Drama Club
Mock Trial
Prism (*yearbook & literary magazine*)
Pro Life Club
Regent (*newspaper*)
Showcase Choir
Students Working to Advance Technology
World Languages and Cultures Club

SERVE

Ambassadors
Clown Ministry
Environmental Club
Regina News Team
S.A.D.D.

LEAD

National Honor Society
Student Council
Athletics
Basketball • Bowling • Cross Country • Golf • Soccer • Softball
Swimming • Tennis • Track • Volleyball

Regina
HIGH SCHOOL

www.reginahigh.com